

**ADVERTISEMENT FOR BIDS
CHIP SEAL CITY STREETS**

The City of Ladysmith will accept sealed bids at Ladysmith City Hall, 120 Miner Ave. W., P.O. Box 431, Ladysmith, WI 54848 until 4:00 p.m. Wednesday May 14, 2025 for various City streets.

Crack-fill, Poly-fiber Patch & Chip Seal various City Streets (approx. 10 blocks)

A list and map of streets along with other bid information can be obtained from the Public Works Dept. at the above address or by visiting www.cityofladysmithwi.com . The City of Ladysmith reserves the right to accept or reject any and all bids and to accept the bid deemed most advantageous to the City.

Project Specifications for:
Crackfill, Poly Fiber Patch & Chip Seal Various City Streets

The City of Ladysmith Public Works Department is hereby requesting sealed bids for chip sealing of various City streets. The following specifications detail the quality of work that will be supplied by the contractor who is selected.

Crackfill, Poly Fiber Patch & Chip Seal

Scope of Work

- The work under this section shall consist of the surface preparation and application of a chip seal surface upon existing asphaltic pavement at the locations and as specified in the bidding documents and as provided by the contract.
- The Contractor shall furnish all labor, supervision, equipment, materials, supplies, tools, and incidentals for the work. Cracks will be routed out to a minimum 1:1 ratio width versus depth and filled using poly fiber.
- Cracks will be heated by heat lance as necessary depending on air/pavement temperature.
- The **start / end of work** have been field marked with **white paint** for clarity

Description

- A single chip seal coat shall be applied in conformance to the following guidelines

Materials

- All required materials shall be furnished under this contract and shall conform to the specifications.
- Materials shall be furnished and delivered to the job site at an appropriate time schedule to meet the project requirements.
- The asphalt sealant shall meet all requirements of Type CRS-2 or approved equal, the asphalt shall be heated as specified by the manufacturer.

Aggregate

- The cover aggregate shall be a FA 2.0 fractured trap rock aggregate.

Surface Preparation

- Prior to placing any asphaltic materials on the existing pavement, the Contractor shall be responsible for all measures required providing a thoroughly clean and dry pavement surface including vegetation removal and sweeping prior to the Chip Seal application. The Contractor shall observe the condition of the pavement prior to bidding to determine the work necessary to provide a clean, dry pavement for construction and shall include the work necessary in the bid.

Rolling Aggregate

- Rolling of the aggregate shall be done immediately after the spreading of the cover aggregate to insure embedding of the aggregate. Subsequent rolling using pneumatic-tire rollers is required until thoroughly embedding the aggregate and the surface is smooth and uniform in texture.

Manholes & Valve Box Covers

- The Contractor shall locate, mark and protect all existing manhole and valve box covers in such a manner that they will not be covered or become stuck with the chip seal materials and can be readily located again after the chip seal application. After the chip seal application is complete, the Contractor shall locate the manholes and valve boxes and remove their protective devices. After the protective devices are removed, the Contractor shall test open each manhole and valve box cover and, where necessary, remove any asphaltic material, which may have accumulated in the lifting holes or along the frame-to-cover interface from the chip sealing operation. When the covers are reinstalled, the Contractor shall make sure the covers do not rattle.

Insurance

- Certificate of insurance and workmen's compensation certificates must be supplied to City of Ladysmith Public Works Department before work can begin.

Safety

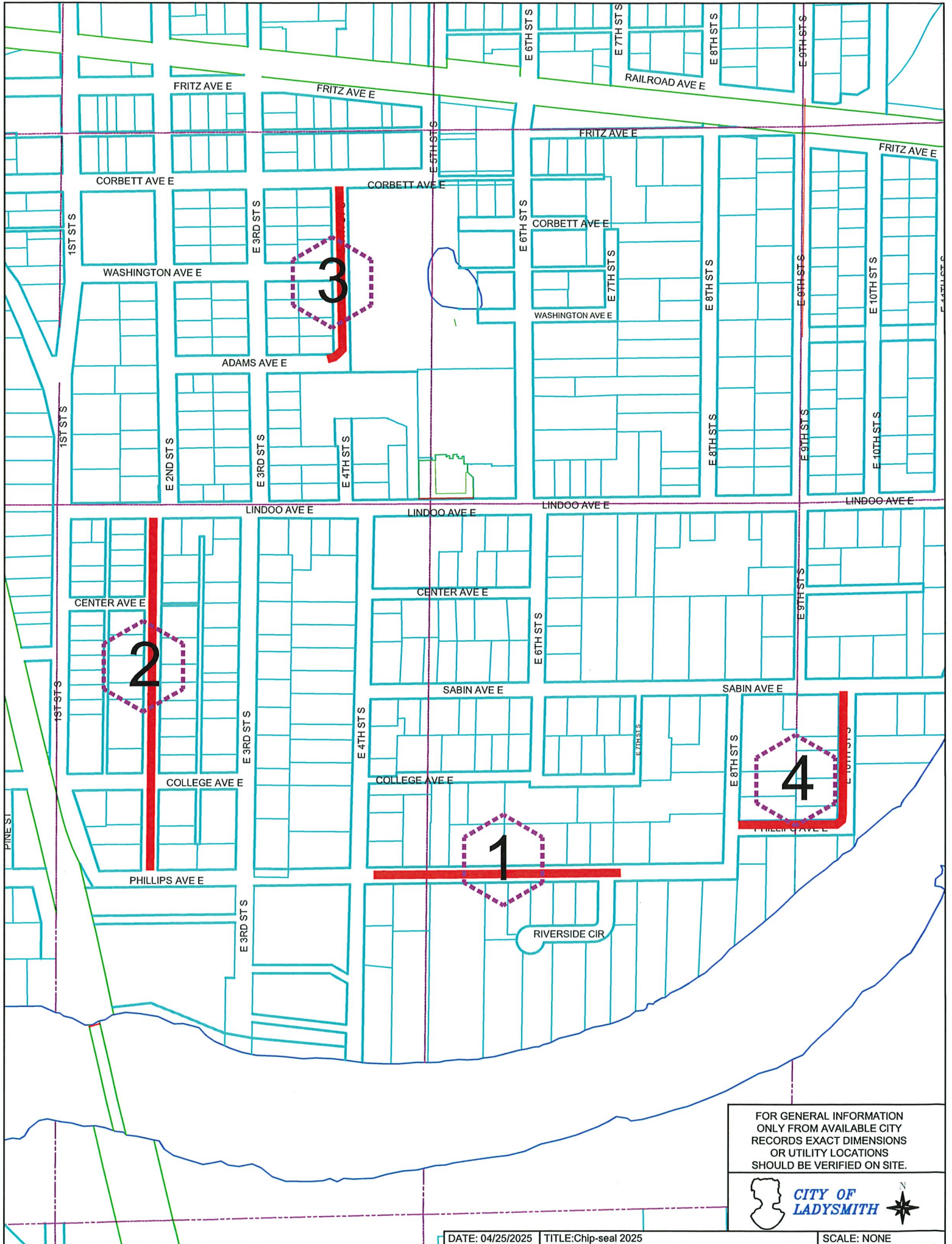
- Standard safety practices must be followed at all times while working on City Streets.
- Traffic control shall be provided by the contractor to maintain safety, minimize distress to the fresh asphalt seal coat and allow access to adjoining properties during construction and curing.

Final

- Bids will include all labor, materials, and equipment necessary to complete project.
- All work to be **completed by September 26, 2025**

Crack-fill, poly-fiber patch & chip-seal List

	<u>Road</u>	<u>From:</u>	<u>To:</u>
1	Phillips Ave E	E 4th St S	Riverside Circle
2	E 2nd St S	Lindoo Ave	Phillips Ave
3	E 4th St S	Corbett Ave	Adams Ave
4	E 10th St S	Sabin Ave	Phillips Ave

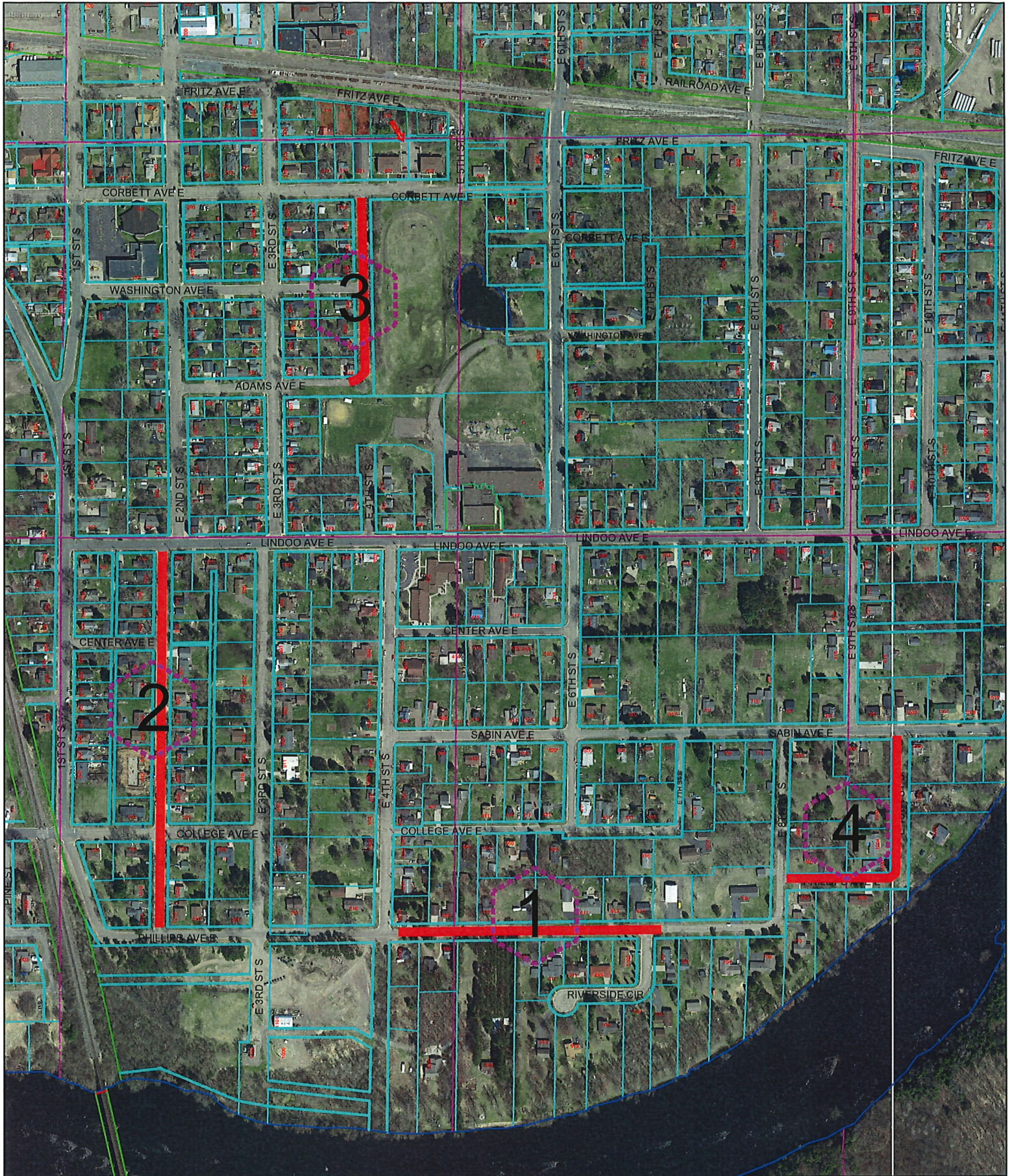


FOR GENERAL INFORMATION ONLY FROM AVAILABLE CITY RECORDS EXACT DIMENSIONS OR UTILITY LOCATIONS SHOULD BE VERIFIED ON SITE.



**CITY OF
LADYSMITH**





FOR GENERAL INFORMATION ONLY FROM AVAILABLE CITY RECORDS EXACT DIMENSIONS OR UTILITY LOCATIONS SHOULD BE VERIFIED ON SITE.

